

# AGRI WELD

## SIDE POD TRANSPORT BOX

### Operator Manual



The Workshops  
Main Street  
Garton-on-the-Wolds  
Driffield, YO25 3ET  
Tel: 01377 259140  
Email: [sales@agriweld.co.uk](mailto:sales@agriweld.co.uk)

# AGRI WELD

## Contents

|                     |   |
|---------------------|---|
| <b>Page 3</b>       | General Safety & Qualifications & Training          |
| <b>Page 4</b>       | Further Safety & Unit Weight                        |
| <b>Page 5</b>       | Risks of Overloading                                |
| <b>Page 6 - 7</b>   | Attachment to tractor front linkage                 |
| <b>Page 8</b>       | Assembly  |
| <b>Page 9</b>       | Parts List  |
| <b>Page 10 - 11</b> | Special Safety Instructions & Important Maintenance |
| <b>Page 12</b>      | Warranty  |
| <b>Page 13</b>      | Connecting Your LED's                               |
| <b>Page 14 - 15</b> | Risk Assessment                                     |
| <b>Page 16</b>      | Stickers  |
| <b>Page 17</b>      | C E Declaration of Conformity                       |
| <b>Page 18</b>      | Notes   |

## Introduction

### General Safety

This manual must be provided to all persons concerned who will be involved with the setting up, operation, maintenance and use of the tractor and transport box. It must be available at all times.

If important safety instructions are not complied with, it can lead to the risk of injury to you and others as well as damage to property and the environment.

### **NON COMPLIANCE WITH SAFETY INSTRUCTIONS CAN LEAD TO WARRANTY CLAIMS BECOMING INVALID.**

### Qualifications and Training

Only personnel with the appropriate licence are authorised to use this implement.

Statutory minimum age limits must be observed and reliable personnel only should perform maintenance/work on this implement.

Persons undergoing training or instruction or taking part in a general training course should only use this implement under direct supervision of an **experienced\*** and trained person.

The use of spare parts, accessories and ancillary equipment not supplied or approved by Agriweld could have detrimental effects to the construction or functions of the Agriweld toolbox. Agriweld shall not be responsible for any damage caused by the use of spare parts or accessories and ancillary equipment not supplied or approved by Agriweld.

The operator must be aware of their responsibilities with regard to observing traffic regulations. The operator must have the authority to refuse instructions issued by third parties which contravene safety.

Any conversions or modifications to the implement may only be carried out after prior consultation and written confirmation from Agriweld.

***\*Experienced persons are classed as those individuals who have been trained, know current knowledge and skills or have participated in the use of the type of activity and equipment for several years.***

## **Further Safety**

Any warning signs/instructions on the machine provide important information and must be observed.

Ensure that you are familiar with the equipment, controls and functions before starting work.

Check round the attachment for any noticeable damage, or missing parts before starting work.

It is advisable that the operator wears close fitting clothing to avoid the risk of snagging and trapping.

Ensure that you watch out for wandering individuals (particularly children!).

Always match your speed to the conditions and legal speed limits. Observe and respect traffic regulations when using public roads.

Remember to take into account the size of any attachments mounted to the tractor and be aware of the sideways forces acting on the machine when turning and negotiating corners. Always ensure adequate all round visibility.

The driving characteristics of the forklift/loader/tractor are influenced and altered by the mounted of attachments and it is important to ensure adequate steering and braking ability as required.

### **Unit Weight:**

Approximate weight 250Kgs

Please see serial plate for further information.

### **RISKS OF OVERLOADING**

It is your responsibility to check the maximum load capacity of your tractor chassis/front linkage, before ordering your transport to ensure that you do not exceed the recommendations advised by the tractor/front linkage manufacturer.

It is important to ensure any additional weight imposed when carrying tools/spares stored within the transport box is accounted for and the additional weight does not exceed the overall maximum capacity of the tractor's linkage/chassis.

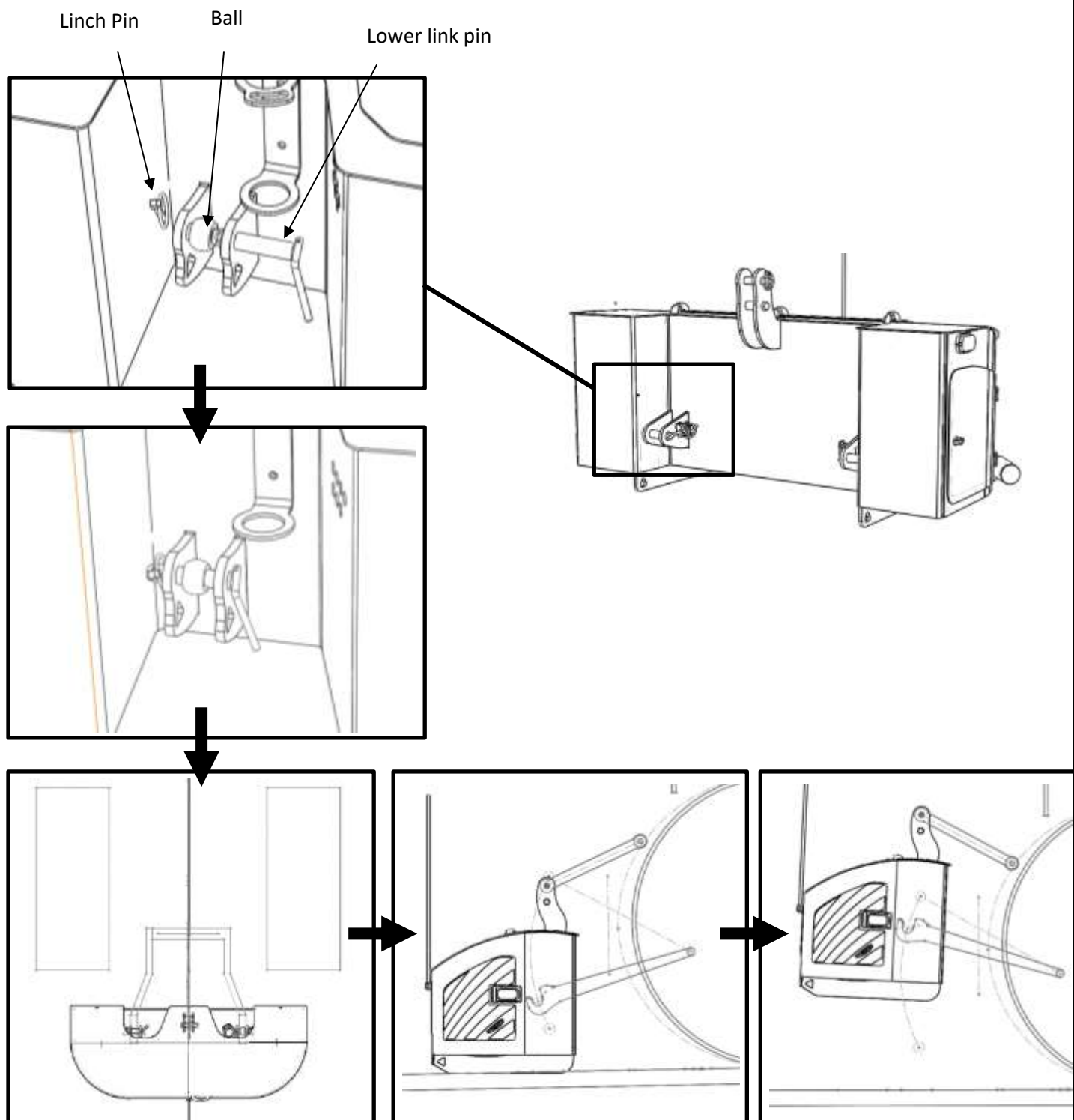
***Your transport box is capable of carrying a balanced internal load of 500kg maximum.***

Ensure that the load being carried in the transport box is balanced as equally as possible at each side.

Always secure any contents of the transport box by locking any doors/lid before setting off.

**It is dangerous to overload your transport box and/or tractor chassis.**

## ATTACHMENT TO TRACTOR FRONT LINKAGE



Note: We do not provide linkage balls with the transport box

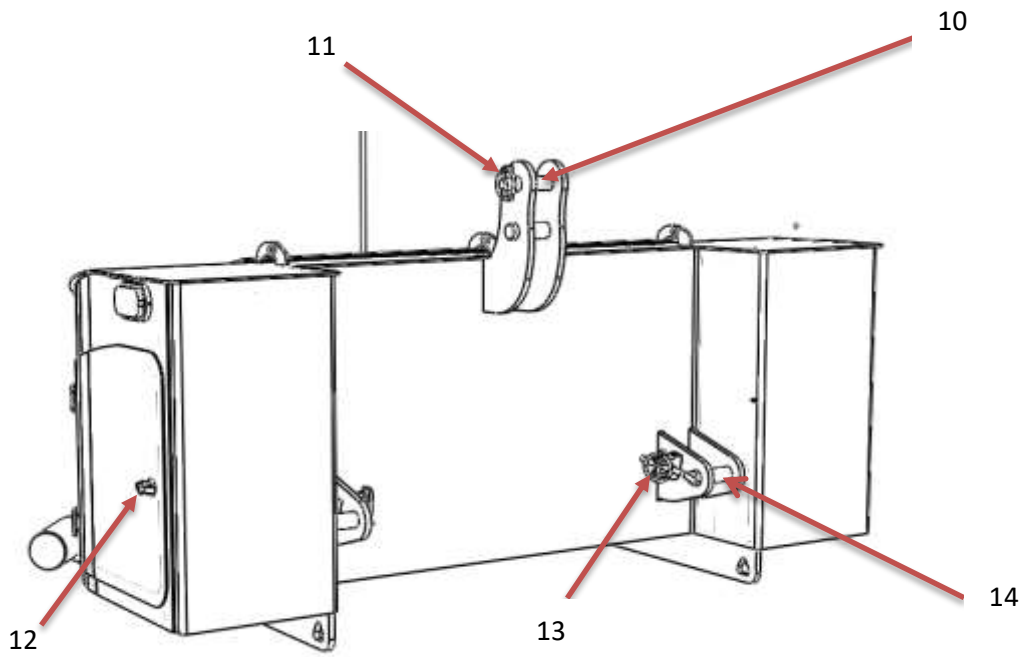
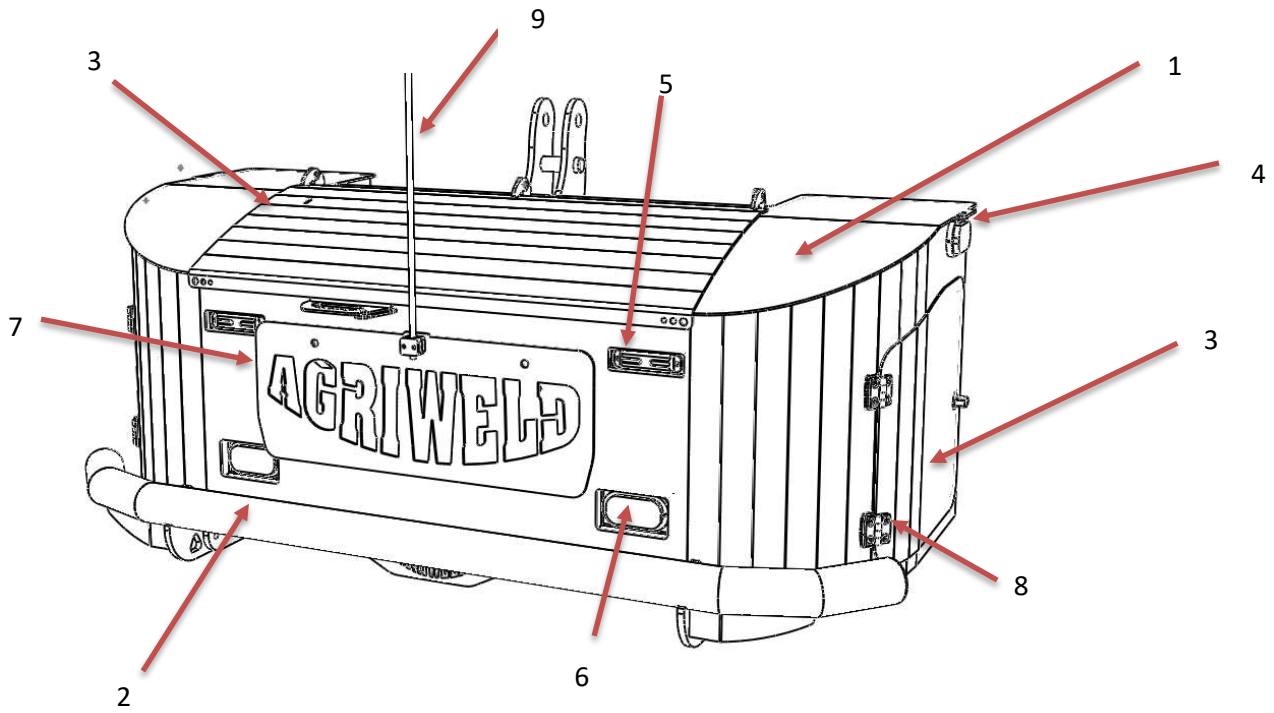
## ATTACHMENT TO TRACTOR FRONT LINKAGE Cont..

1. Remove linch pins and lower link pins from transport box lower link points to allow you to fit the appropriate CAT 2/2 or CAT 3/2 ball onto the lower link pin as shown.
2. When you are satisfied that the lower link balls are fitted correctly to both lower link pins, drive the tractor centrally towards the back of the transport box with the link arms down far enough to go under the link pins. Ensuring that the locking mechanism on the tractor lower link hook is in the **open position**.
3. When the tractor lower link is located under the ball, lift the tractor front linkage arms up slowly, so the balls are sat and located in the hook. You must then get out of the tractor, or have a second person available to change the locking mechanism on the tractor lower link hook to the **closed position**.
4. Fit the top link from the tractor front linkage to the top link pin on the transport box, adjusting it as required so the transport box sits parallel to the ground.
5. You can then lift the transport box to an appropriate height for ground clearance.
6. Check all connections **ARE SECURE** before use.

**SAFETY FIRST:** REMEMBER TO KEEP YOUR FEET AND LIMBS AWAY FROM UNDERNEATH THE WEIGHT AT ALL TIMES IN CASE OF DROPPING.

IT IS ADVISABLE TO KEEP THE TRANSPORT BOX AS LOW TO THE GROUND AS POSSIBLE UNTIL YOU ARE CONFIDENT THAT IT IS CONNECTED CORRECTLY.

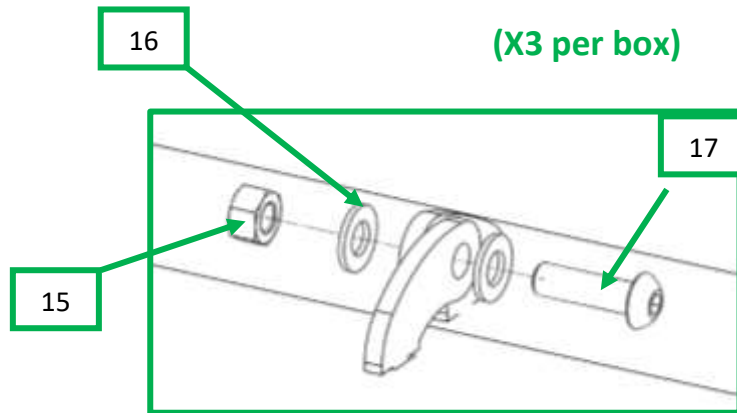
### Transport Box Assembly





### Lid hinge assembly

(X3 per box)



### Transport Box Parts List

| NO | DESCRIPTION             | PART NUMBER | QTY PER BOX |
|----|-------------------------|-------------|-------------|
| 1  | Transport box body      | -           | 1           |
| 2  | Bumper bar              | -           | 1           |
| 3  | Side door               | -           | 2           |
| 4  | LED Side Marker         | -           | 2           |
| 5  | Front flasher Amber LED | -           | 2           |
| 6  | Front fixed white LED   | -           | 2           |
| 7  | NAME PLATE              | AW_NP       | 1           |
| 8  | Side door hinge         | 770-3018    | 4           |
| 9  | Centre Marker           | AW_TB_CM    | 1           |
| 10 | Top link pin            | Z325110KR   | 1           |
| 11 | Linchpin                | LP11Z       | 1           |
| 12 | Door Lock               | 3Q004B      | 2           |
| 13 | Linchpin                | LP6KR       | 2           |
| 14 | Lower link pin          | Z528123KR   | 2           |
| 15 | M10 NYLOCK NUT          | AWM10N      | 3           |
| 16 | M10 WASHER              | AWM10W      | 9           |
| 17 | M10 BUTTON HEAD BOLT    | AWM10BHB    | 3           |

## **Special Safety Instructions**

Take extra care when connecting or disconnecting the transport box to/from the tractor. Be aware of what is under the transport box (such as your feet) before dropping it off.

Ensure that the tractor's hydraulic system is in full working order.

Never allow any person to stand between the tractor and the transport box during connection or at any time unless the tractor is secured against rolling away by use of a parking brake and/or wheel chocks.

It is forbidden to allow any persons to ride or sit on the transport box at any time. Observers should maintain a safe distance when machine is in use.

When performing any adjustments to the machine the tractor engine must be switched off to prevent the hydraulics from operating.

Ensure that any items stored in the transport box are completely secured by closing the lid and side pod doors and fixing them closed.

**The shackle points are intended for light use only. E.g.: for pulling a furrow press out of a corner using a chain. They are more of a chaining point not an actual towing point and are NOT suitable to tow a trailer down a public road when in use on the rear linkage. The shackle points can be used for towing lighter loads round the yard, however, they are not a load tested item and so cannot be guaranteed safe for use on public highways and is to be used for towing at own risk.**

## **IMPORTANT MAINTENANCE & SAFETY**

Regular maintenance is a prerequisite for good operational reliability. The following safety advice is to be observed before starting any maintenance, cleaning or repair work.

Trained personnel may only execute maintenance activities.

Inform operating personnel before beginning special operations and maintenance work! Delegate a supervisor!

If necessary, ensure that the maintenance area is adequately secured.

Use suitable tools and wear gloves and appropriate PPE when working on the attachment!

Switch off the loader/tractor completely for maintenance and repair work and ensure that it is protected against inadvertent starting by:

- Locking the principal controls and removing the ignition key and/or
- Detaching the hydraulic supply.

Carry out maintenance and repair work only when the tractor and attachment is positioned on stable and level ground and has been secured against involuntary movement and toppling.

To avoid the risk of accidents, and if applicable, individual parts and larger subassemblies being moved for replacement purposes should be carefully securely attached to lifting tackle. Use only suitable hoisting and lifting gear with adequate load capacity, which is in proper working condition. Never work or stand under suspended loads!

The securing of loads and the instruction of crane operators should only be entrusted to experienced persons. A signaller giving instructions must be within sight of the crane operator or must be provided with a radio link.

For carrying out any overhead work, if applicable, always use specially designed facilities or safe ladders/ platforms. Never climb on the machine itself! Wear a safety harness when carrying out maintenance work at greater heights.

Clean the attachment, especially connections and threaded unions (if relevant), of any traces of oil, fuel or preservatives before carrying out maintenance/repairs! Never use aggressive detergents. Use lint-free cleaning cloths.

Before cleaning the attachment with water or steam jets (high-pressure cleaners) or other cleaning agents, cover or tape all openings and electrical components which – for safety and operational reasons – must be protected against ingress of water, steam or cleaning agents (if applicable).

After cleaning, if applicable, examine all fuel, lubricant and hydraulic oil lines for leaks, loose connections, scuffing marks and damage. Any defects found must be rectified without delay.

Always retighten any screwed connections that have been unscrewed during maintenance and repairs.

Any safety devices removed for setting-up, maintenance or repair purposes must be refitted and checked immediately upon completion of the maintenance and repair work and prior to operation.

**There are no operating mechanical parts associated with your transport box although please follow the checks below regularly to ensure that any noticeable damage or faults are noticed by the operator.**

- **Before use, always check round the transport box to ensure no damage has occurred and that the machine appears safe to use.**
- **Keep the transport box clean at all times to enable users to perform easy visual check for damage/faults.**
- **Ensure that the tractor & front linkage is in full working order and that the transport box is attached to the tractor correctly before starting work.**

- **Do not overload the transport box at any time to prevent damage the the front linkage/tractor chassis and potential injury.**

### **WARRANTY**

Your Agriweld transport box is covered for a period of 12 months from the date of dispatch (which is recorded on our files) against faulty components and/or bad workmanship.

Our welders are coded to ISO 9606-1 and our welding procedures are approved in accordance with ISO 15614-1 to manufacture your equipment. All products are checked for quality prior to delivery/collection.

We cannot be responsible for claims arising from ignorance, occurrences outside our control, such as accidents, and malicious damage, non-compliance with safety instructions and non-maintenance.

Any damage occurred during transit must be reported on signing for the item from the haulier to enable us to enter a claim for damages direct with the haulier.

### **WARRANTY CLAIMS FOR DAMAGE DURING TRANSIT**

**Damage occurred during transit via an external haulier must be reported immediately upon unloading and signing for the item. The limit of our liability to undertake repairs to products damaged during transit is dependent on signing for any damaged product upon delivery as "DAMAGED".**

## **CONNECTING YOUR LEDS**

If you have ordered amber flashing LED side marker lights with your transport box, you will need to supply and fit the relevant 12-24V electrical plug to suit the connection to your tractor.

### **LED SIDE MARKER LIGHTS FITTING INSTRUCTIONS**

To connect your white LED side marker lights you will need to wire them up to a relevant 12-24 V electrical plug, suitable for your tractors electrical supply.

**BLUE** WIRE = EARTH (NEGATIVE -)

**BROWN** WIRE = LIVE (POSITIVE +)

## Transport Box Risk Assessment

Date risk assessment completed: FEBRUARY 2020 – Next due for review: FEBRUARY 2021  
 Organisation name: Agriweld Ltd

MACHINERY TYPE: Transport Box

Description: An attachment for the front or rear of a tractor for carrying spares/tools etc to keep clutter from the tractor cab. Attaching via a front linkage or bolster fitting with option to add additional weight up to 500kgs



| What are the hazards?                                | Who might be harmed and how?   | Risk evaluation Levels 1-5 (1 = Low risk, 5 = High risk) | Precautions in place  | Further action required/notes?  |
|--|--|--|---|---|
| Transport box detaching causing crushing/trapping    | Operators and bystanders if transport box falls unexpectedly or whilst attaching to tractor linkage, trapping limbs or being crushed | 2  | Feet fitted to the base of the transport box assists preventing crushing/trapping injuries to limbs if it becomes detached and falls.<br>Operator manual stipulates information on the correct use, capacity and to check connection to the tractor prior to use each time for signs of damage or missing parts that could be responsible. Regularly check/replace linkage and lynch pins if deemed faulty or missing. Note in manual references not standing in between the tractor linkage and the transport box during attachment/detachment and at all times. | Continue to ensure every customer receives an operator manual and review/update all safety measures as required. Online version of manual available on Agriweld website at all times.                           |
| Lack of operator training/ignorance causing accident | Operator and bystanders  | 3  | A bright yellow warning sticker is attached to the transport box, to alert operators to read the operator manual. Operator manual states all operators of the tractor must have a valid licence/experience.   | Maintain the availability of the operator manual on line as well as paper copy so that it can be available 24 hours a day if required. Ensure assembly team realise the importance of attaching correct decals. |
| Worn parts and non-maintained attachments can        | Operator and bystanders. Aged or worn linkage parts  | 2  | Notes in the operator's manual inform operators to keep the transport box clean and inspect prior to each use noting any areas of concern/damage,   | Operator manual advises regular maintenance checks  |

## Transport Box Risk Assessment

| <i>What are the hazards?</i>   | <i>Who might be harmed and how?</i>  | <i>Risk evaluation Levels 1-5 (1 = Low risk, 5 = High risk)</i> | <i>Precautions in place</i>   | <i>Further action required/notes?</i>  |
|--|--|---|---|--|
| become loose on connection   | causing poor connection to tractor and coming loose causing potential detachment                                     |   | Operator manual states not to use the transport box if there are any parts damaged or missing. See Page 15  |  |
| Failing LED lights & damaged wire/cabling – potential collision on highways/at junctions       | Operator & general public/other road users by non-maintenance  | 2   | The LED wiring loom is correctly installed and clipped out of the way of catching/snagging wires and is connected up to a junction box. Operators are advised to use the correct tools/PPE to perform any LED repairs/replacements and follow instructions contained in the operator manual.  | Note in LED section of operator manual about regular checks to ensure working correctly before use in the dark |
| Knocks to individuals-wandering into the path of the transport box whilst attached to tractor. | Bystanders walking directly into the transport box by not paying attention when around the tractor and transport box | 1   | Operators advised to be aware of wandering individuals  | See safety notes in operator's manual page 4   |
| Malicious damage   | All  | 1   | It is possible that malicious damage can be caused<br>E.g removing linch/linkage pins, damage to brackets or cutting wires for the LEDs<br>Operator manual states transport box should be checked over prior to each use which would alert the operator of any missing or damaged parts   | See notes in operator's manual page 4  |
| Overloading tractor chassis/front linkage-causing failure of tractor linkage                   | Operator and general public  | 2   | Agriweld do not advise including any additional weight over 500kgs to allow for carrying tools/spares. Anything unusual is referred to design for approval or rejection and anything detrimental/unsafe is refused.<br>Operator manual states that riding or carrying anything on the transport box whilst connected is prohibited. | Risk of overloading section listed in operator's manual  |
| <i>What are the hazards?</i>   | <i>Who might be harmed and how?</i>  | <i>Risk evaluation Levels 1-5 (1 = Low risk, 5 = High risk)</i> | <i>Precautions in place</i>   | <i>Further action required/notes?</i>  |

## Stickers


| Sticker   | Part number                 | Description                  | Quantity per Machine |
|---|-----------------------------|------------------------------|----------------------|
|    | AW_WB_AS<br>(185 mm x 85mm) | Agriweld Sticker             | 3                    |
|    | AW_WB_GB<br>(85mm x 50mm)   | Great Britain Sticker        | 3                    |
|  | Serial plate<br>(76mmX51mm) | Serial plate                 | 1                    |
|  | AW_CV_STL                   | Standard Chevron             | 2                    |
|  | AW_OM_S                     | Read operator manual sticker | 1                    |



## CE DECLARATION OF CONFORMITY

The equipment which accompanies this declaration is in conformity with EU Directive(s):-

### 2006/42/EC Machinery Directive

|  |  |
|--|--|
| Manufacturer Name:                                 | Agriweld Ltd   |
| Manufacturer Address:                              | Main Street<br>Garton-on-the-Wolds<br>Driffield<br>East Yorkshire<br>YO25 3ET        |
| Product:   | Transport Box with side pod storage  |
| Product Options:                                   | Front LED, Front<br>flasher LED,<br>Bumper bar, Centre<br>marker.                    |
| Individual Serial Number:                          |  |
| Product Description:                               | Front linkage mounted side pod transport box   |
| Date of Last Load Test Report:                     | N/A  |
| Supplementary Information:                         | WEIGHT: Approx. 250kgs   |
| Authorised Signatory on Behalf of<br>Manufacturer: |  |
| Name of Signatory:                                 | Dawn Foster  |
| Position in Company:                               | Director   |
| Date of Issue:                                     |  |




Notes